

Antonyms

Antonyms are words with opposite meanings
Match the opposite words below



BIG



SMALL

above

full

after

arrive

awake

beautiful

cold

clean

closed

black

before

ugly

hot

below

dirty

empty

white

open

asleep

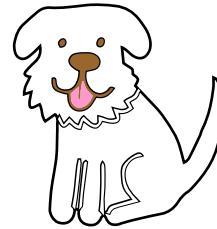
depart

Antonyms

Antonyms are words with opposite meanings
Match the opposite words below



Black



White

big

closed

day

float

happy

right

young

full

add

sour

night

empty

sad

little

wrong

open

sweet

subtract

old

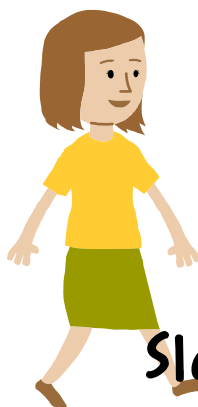
sink

Antonyms

Antonyms are words with opposite meanings
Match the opposite words below



Fast



Slow

sunny

laugh

wet

heavy

long

lost

last

true

in

hard

false

first

out

dry

found

cry

cloudy

soft

light

short

Antonyms

Antonyms are words with opposite meanings
Match the opposite words below



Inside

Outside

man

narrow

new

off

noisy

even

north

pull

odd

tiny

quick

quiet

huge

south

wide

slow

push

old

on

woman